

ALKO DATA SHEET - 24/5/96 *SUBJECT TO CHANGE WITHOUT NOTICE*

(All Dimensions in mm)

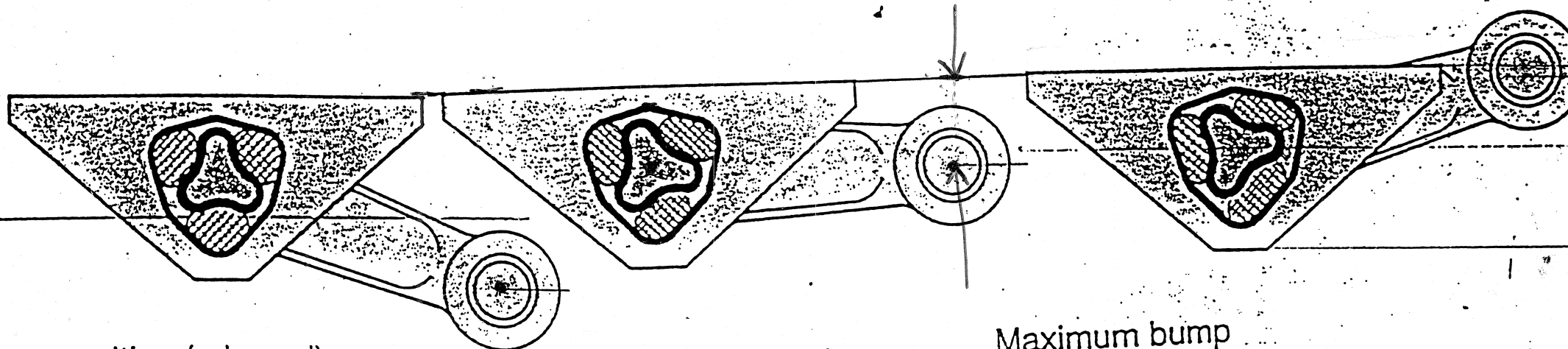
		<i>CRANK Ø 57.0 TO OUT = 190</i>					Capacity (Kg) <i>16"</i>			
		100-400	401-850		851-1250	1251-1450	Off Road	1601-2500		
			401-600	601-850				1601-2000	2000-2200	2201-2500
Outer Tube Size		62x3	80x3	80x3	97x4	97x4	110x4	120x5	120x5	120x5
Inner Tube Size		42x3	56x4.5	56x4.5	66x7.1	66x7.1	76x7	88x8	88x8	88x8
	15" & 16" Wheels	n/a	n/a	n/a	n/a	n/a	76x7	88x8	88x8	88x8
Inner Tube Length - Nominal		350	400	400	480	480	500	500	500	500
Swing Arm Thickness		25	25	25	32	32	32	40	40	40
	15" & 16" Wheels	n/a	n/a	n/a	n/a	n/a	32	40	40	40
Stub Axle Diameter		39	39	39	45	45	45	56	56	56
Swing Arm	Centres	130	145	145	160	160	175	200	200	200
	Stub Hole Diameter	39	39	39	45	45	45	56	56	56
Stub Axle Bearing Config.		LM	LM	LM	S/L	S/L	S/L	2T	2T	2T
	15" & 16" Wheels	n/a	n/a	n/a	n/a	n/a	1.5T / ESS	2T	2T	2T
Stub Axle Length to Suit	13" & 14" Wheels	205	205	205	205	205	n/a	n/a	n/a	n/a
	Com/Alloy/600xØ	235	235	235	235	235	n/a	n/a	n/a	n/a
	16" Wheels	n/a	n/a	n/a	n/a	n/a	235	255	255	255
	12" Electric Brakes	n/a	n/a	n/a	n/a	n/a	235	255	255	255
	Land Rover	n/a	n/a	n/a	n/a	n/a	235	255	255	255
Standard	Bracket Width	60	60	60	60	60	70	70	70	70
	Bracket Hole Centres	160	160	160	160	160	220	160/220	160/220	160/220
	Mounting Bolt Diameter	12	12	12	12	12	12	12/16	12/16	12/16
Marine	Bracket Width	120	120	120	120	120	140	140	140	140
	Bracket Hole Centres	60	60	60	60	60	70	70	70	70
Rubber	Diameter	22	28	28	32	32	37	40	2x40/1x42	3x42
	S/Hardness		64	68	68	72	72			
	Length	Refer to Rubber Spec Sheet								
1/2 Axle	Tube Length	500	500	500	500	500	500	500	500	500
	Bracket Centres - Std	420	420	420	420	420	420	420	420	420

ALKO DATA SHEET - 8/8/01

(All Dimensions in mm)

Capacity (Kg)

		Capacity (Kg)								
		100-400	401-850		851-1250	1251-1450	Off Road	1601-2600		
			401-600	601-850				1601-2000	2000-2200	2201-2600
Minimum Frame Width to	Hub Face/Slide - Std Bkt	176	178	178	171	171	185	197	197	197
	Overall Stub - Standard	230	230	230	225	226	250	285	285	285
	Hub Face/Slide - Marine	238	231	231	231	231	265	287	287	287
	Overall Stub - Marine	290	285	285	285	285	320	355	355	355
Chassis to Stub Centre	Unladen Standard Arms	85	110	110	130	130	146	135	135	135
	at Load Standard Arms	50	70	70	60	80	100	90	90	90
	at Bump Standard Arms	10	10	10	50	50	70	35	35	35
	Unladen Lo-Line Arms		45	45	70	70	85	75	75	75
	at Load Lo-Line Arms		10	10	30	30	40	30	30	30
	at Bump Lo-Line Arms				10	10		10	10	10
	Unladen Super L/L				20	20				
	at Load Super L/L Arms				-20	-20				
at Bump Super L/L				-40	-40					
Rubber Creep per Side		10	10	10	10	10	10	10	10	
Swing Arm Offset per Side		0	0	0	0	0	0/35	0/35	0/35	



Free position (rebound)

Laden position

Maximum bump